

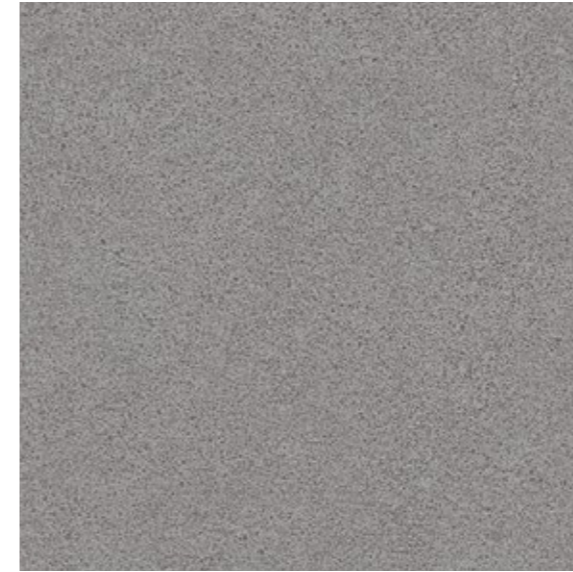


# Creation Looselay

The Reference in Tiles & Planks

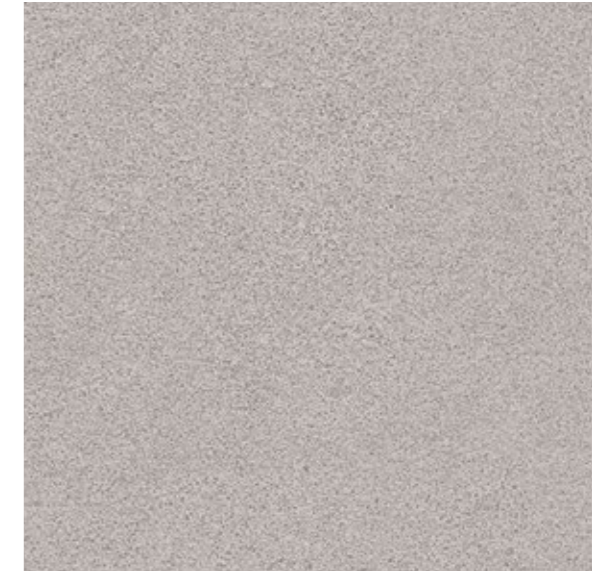
**Gerflor**<sup>®</sup>

# Creation 55 Looselay & Looselay Acoustic



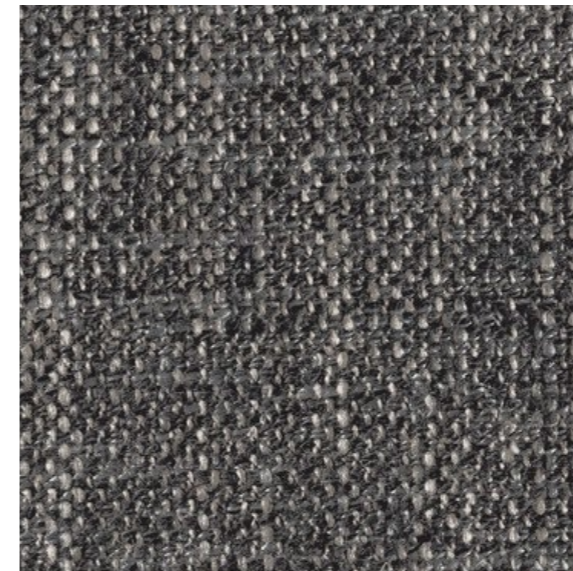
1284 Urban Street Medium

914×914 mm  
LL AC: 600×600 mm



1283 Urban Street Light

914×914 mm  
LL AC: 600×600 mm




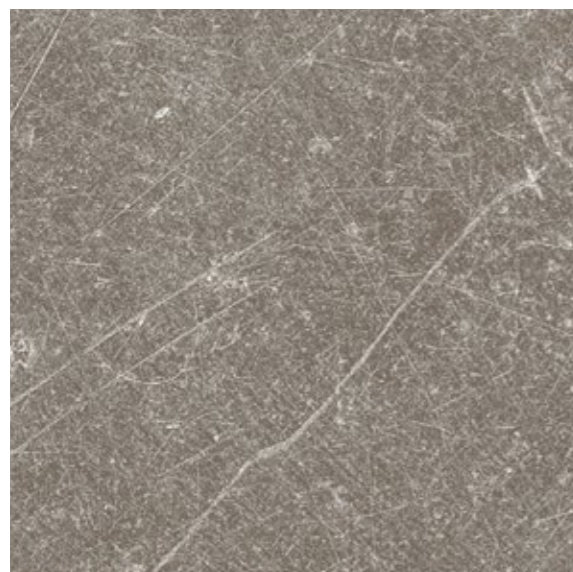
1058 Gentleman Grey

600×600 mm  



1083 Gentleman Taupe

600×600 mm 



0087 Dock Taupe

914×914 mm 



0436 Riverside

600×600 mm 



0374 Parker Station

914×914 mm 



0868 Bloom Uni Taupe

600×600 mm 

Design shade variation:  Light  Medium

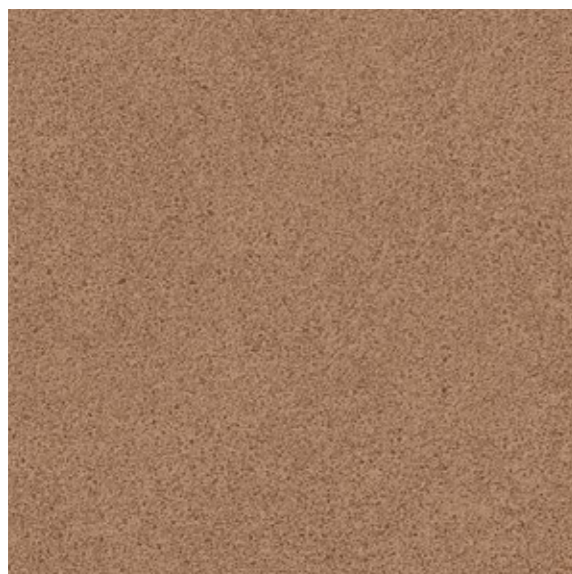
# Creation 55 Looselay & Looselay Acoustic



1564 Gentleman Terra 600×600 mm



1563 Gentleman Cream 600×600 mm   152×914 mm



1566 Urban Street Terra 600×600 mm



1565 Urban Street Cream 600×600 mm

Design shade variation:  Light  Medium



0455 Long Board 229×1220 mm   
LL AC: 229×1220 mm



0504 Twist 229×1220 mm



1559 Tamo Light 229×1220 mm /  152×914 mm   
LL AC: 229×1220 mm



1561 Tamo Natural 229×1220 mm   
LL AC: 229×1220 mm



0456 Ranch 229×1220 mm   
LL AC: 229×1220 mm

# Creation 55 Looselay & Looselay Acoustic



0441 Honey Oak

229x1220 mm



1567 Tamo Clear

229x1220 mm /  152x914 mm



0796 Swiss Oak Golden

229x1220 mm



0347 Ballerina

229x1220 mm   
LL AC: 229x1220 mm



1560 Tamo Dainty

229x1220 mm   
LL AC: 229x1220 mm

Design shade variation:  Light  Medium



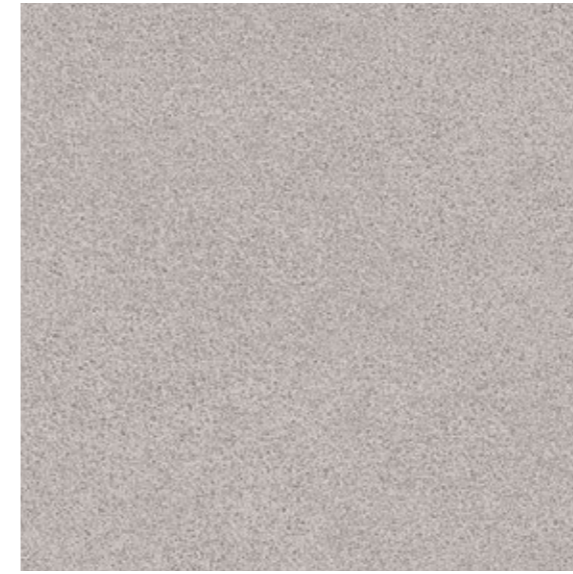
Tamo Dainty



1568 Tamo Light Brown

229x1220 mm /  152x914 mm

# Creation 70 Looseley



1283 Urban Street Light

914×914 mm



1569 Marble Clear

914×914 mm

152×914 mm



1575 Stony Cream

600×600 mm



1576 Stony Medium

600×600 mm



1577 Urban Street Dark

914×914 mm



1570 Marble Dark

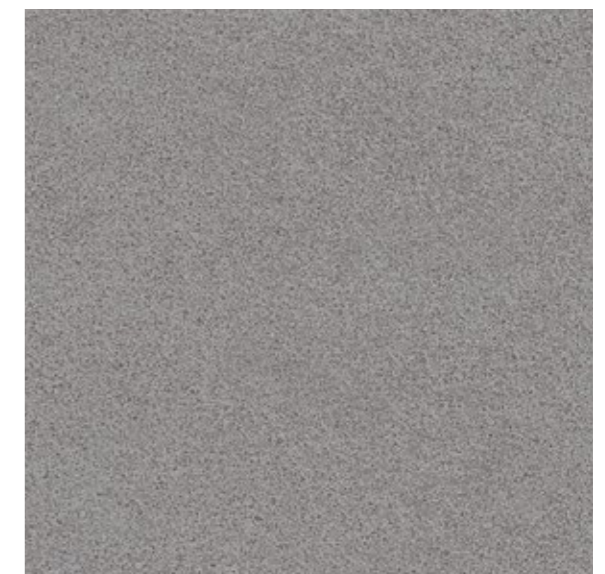
914×914 mm

152×914 mm



0085 Dock Grey

914×914 mm

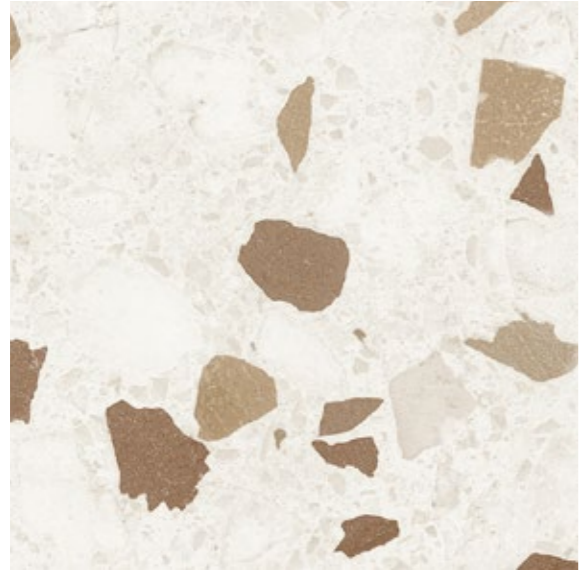


1284 Urban Street Medium

914×914 mm

Design shade variation:  Light  Medium

# Creation 70 Loose Lay



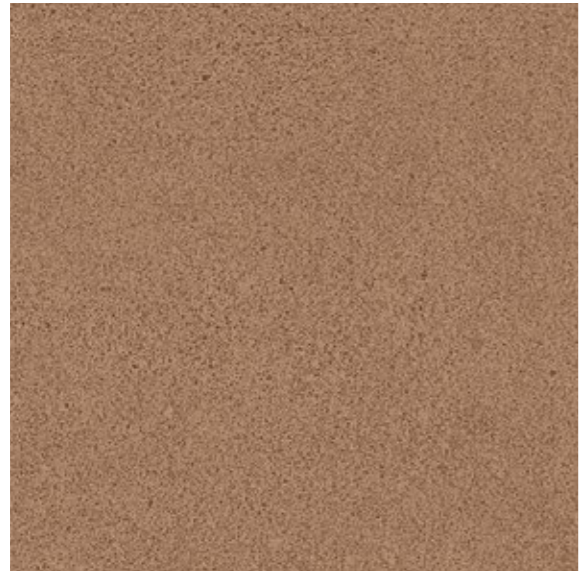
1574 Chips Terra

600x600 mm



1565 Urban Street Cream

600x600 mm



1566 Urban Street Terra

600x600 mm



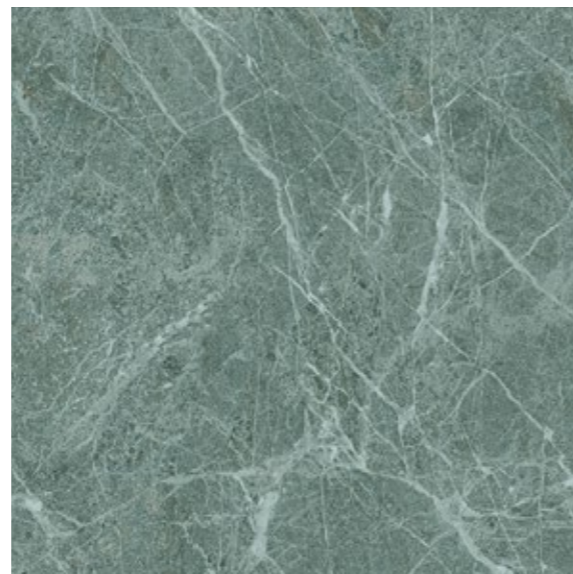
1573 Chips Green

600x600 mm



1572 Chips Blue

600x600 mm



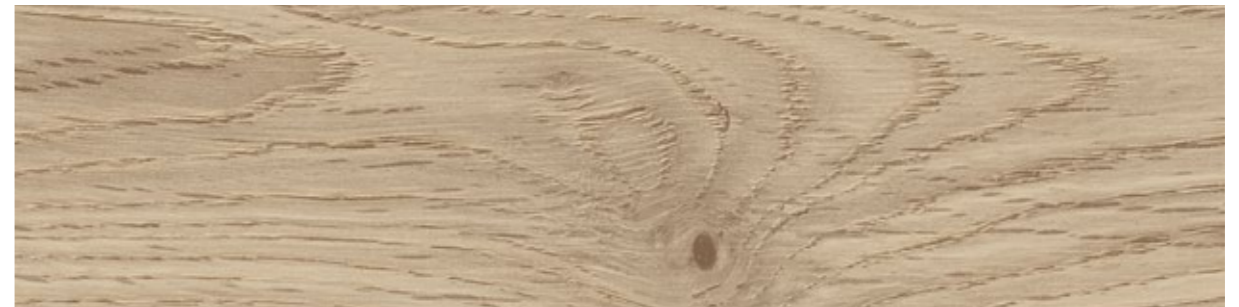
1571 Marble Green

914x914 mm



0455 Long Board

229x1220 mm



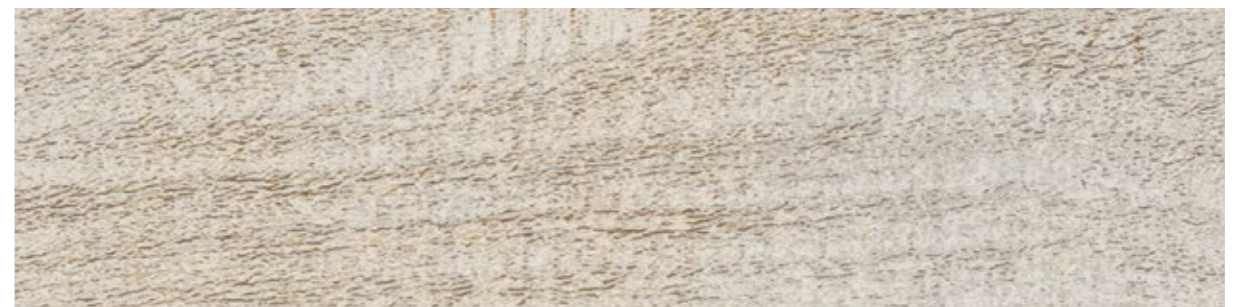
0504 Twist

229x1220 mm



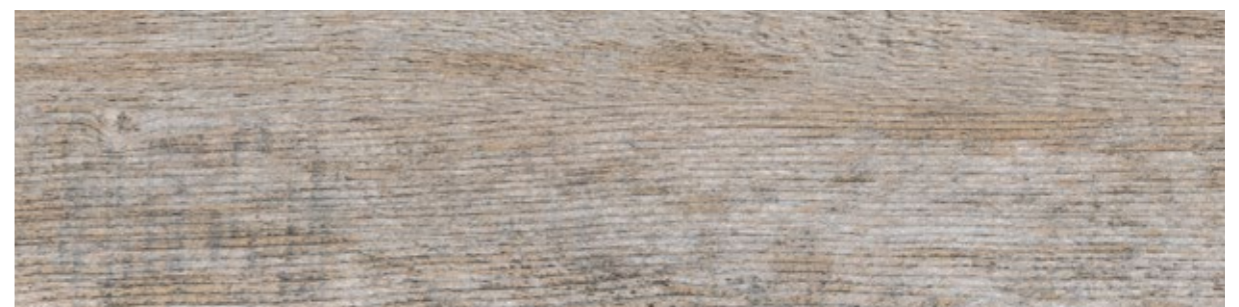
1559 Tamo Light

229x1220 mm / 152x914 mm



0060 Arena

229x1220 mm



0456 Ranch

229x1220 mm



Design shade variation:  Light  Medium

# Creation 70 Looselay

## XL | Planks Lames



1560 Tamo Dainty

229×1220 mm



1578 Namou Light Honey

235×1505 mm



1567 Tamo Clear

229×1220 mm /  152×914 mm



1579 Namou Honey

235×1505 mm



1561 Tamo Natural

229×1220 mm



1580 Namou Dark Honey

235×1505 mm



1568 Tamo Light Brown

229×1220 mm /  152×914 mm



Tamo Dainty

Design shade variation:  Light  Medium

# Structure your spaces, create harmony

## Structurez les espaces, créez l'harmonie



Chips Green / Tamo Light / Marble Dark



## Creation Looselay

**52** designs  
décors

**6** dimensions  
formats

**100%** color matching  
coordonnable

**Discover the quality and expertise of Gerflor in this collection designed to perfectly combine colors, patterns, and formats.**

Retrouvez la qualité et l'expertise Gerflor dans cette collection pensée pour associer coloris, décors et formats à la perfection.

### The most comprehensive Looselay range

L'offre Looselay la plus complète

Creation 55 Looselay  
Creation 55 Looselay Acoustic  
Creation 70 Looselay  
Creation Saga<sup>2</sup>

### Multi-formats



### A dedicated collection for hospitality, offices, commercial areas, and retail stores

Une collection pensée pour chaque espace dans l'hôtellerie, les bureaux, le tertiaire et les boutiques

### EASY TO MATCH WITH GERFLOR CARPET COLLECTIONS

COORDONNABLE AVEC LES COLLECTIONS MOQUETTES GERFLOR

### Full design concept Solutions complètes



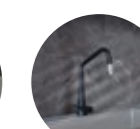
Skirtings  
Plinthes



Profils  
Profilés



Mats  
Tapis



Wall - Mural  
Revela



# Why Looseley?

Pourquoi choisir une pose plombante ?

**The fastest to install!**  
La plus rapide à installer !



**No adhesive, no clic**  
Sans colle, sans clic



**No down time - Direct use after installation**  
Mise en service immédiate - Pas de fermeture

**The easiest to mix!**  
La plus facile à calepiner !



**Easy herringbone installation**  
Installation facile en chevrons



**Square format Easy mix & match**  
Format carré Mix & match facile

**The most durable!**  
La plus durable !



**Reinforced structure with fiber glass veil**  
Structure renforcée par voile de verre



**Easy replacement**  
Remplacement facile

**Apply a pressure sensitive adhesive and install!**  
Appliquez un poissant et posez !



# Sustainability & comfort in one tile!

Une dalle confort et respectueuse de l'environnement !



**100% recyclable through Gerflor's Second Life Program**  
Up to 35% of recycled content

100 % recyclable via le Programme Seconde Vie  
Jusqu'à 35 % de contenu recyclé



**Great indoor air quality**  
TVOC emissions <10 micrograms/m<sup>3</sup> after 28 days

Excellente qualité de l'air intérieur  
Émissions TCOV < 10 micrograms/m<sup>3</sup> après 28 jours



**Reach compliant**  
Conforme Reach



**Carbon footprint EPD available**

Impact carbone FDES disponibles



**Adhesive Free Installation**  
Up to 30 sqm (Creation Looseley)

Pose sans colle jusqu'à 30 m<sup>2</sup> (Creation Looseley)



**Easy to remove**  
**Easy to re-use**

Facile à déposer  
Facile à réutiliser



# Creation Saga<sup>2</sup>



1561 Tamo Natural

500x500 mm



1559 Tamo Light

500x500 mm



1563 Gentleman Cream

500x500 mm



Gentleman Abricot



Tamo Light



1567 Tamo Clear

500x500 mm



1564 Gentleman Terra

500x500 mm



1560 Tamo Dainty

500x500 mm



1581 Gentleman Abricot

500x500 mm



1566 Urban Street Terra

500x500 mm

Design shade variation:  Light  Medium  High

# Creation Saga<sup>2</sup>



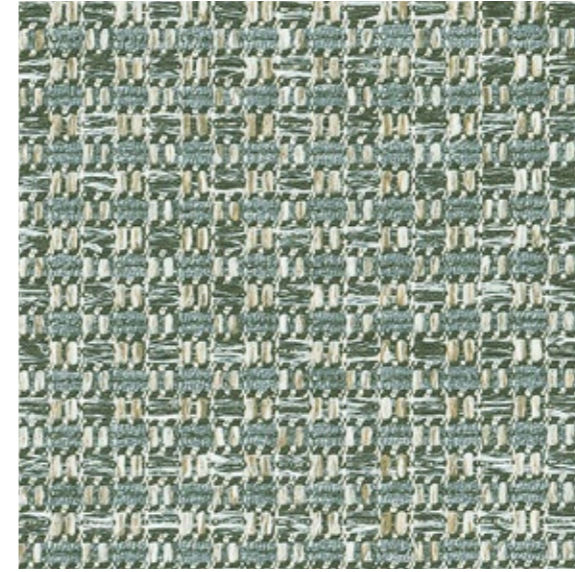
1565 Urban Street Cream

500x500 mm



1608 Oxyd Light Beige

500x500 mm



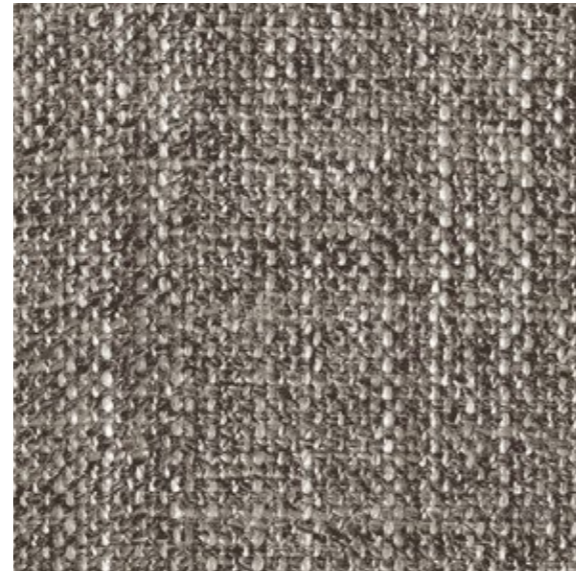
1584 Tweed Chine Amande

500x500 mm



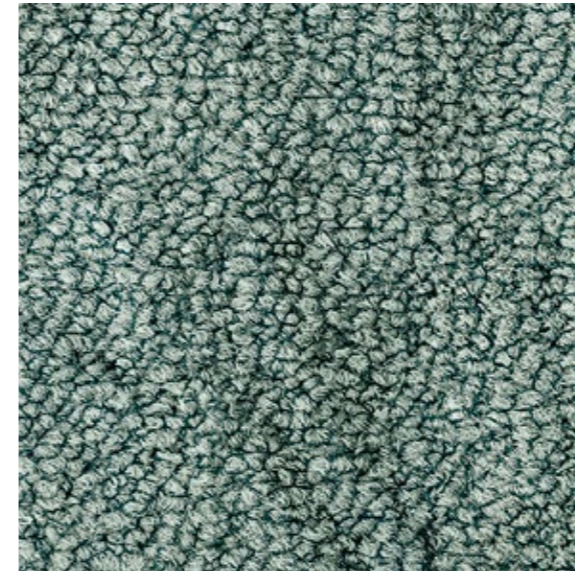
1587 Tweed Medium Beige

500x500 mm



0089 Gentleman Taupe

500x500 mm



1609 Oxyd Light Green

500x500 mm



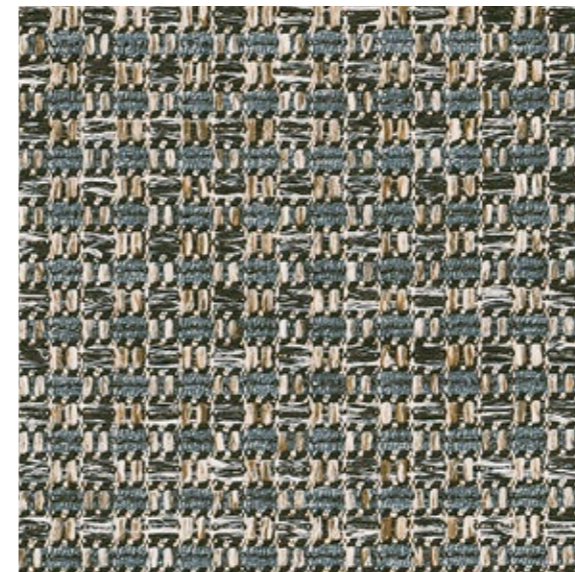
1588 Tweed Rose Ancien

500x500 mm



1582 Gentleman Jean Chine

500x500 mm



1585 Tweed Green Chine

500x500 mm



Design shade variation:  Light  Medium  High

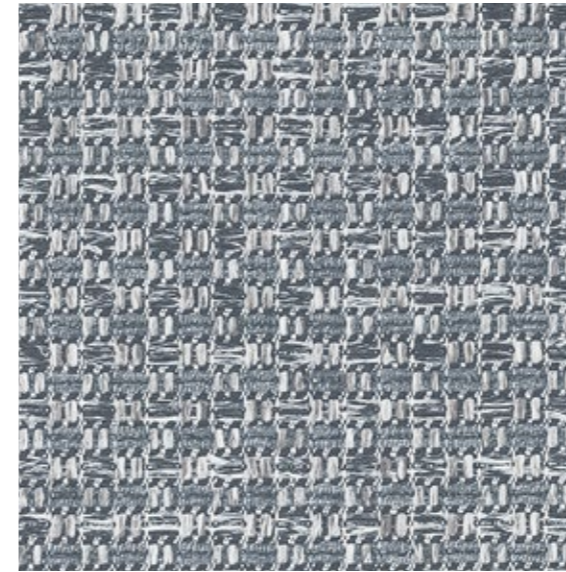


Oxyd Light Green

# Creation Saga<sup>2</sup>

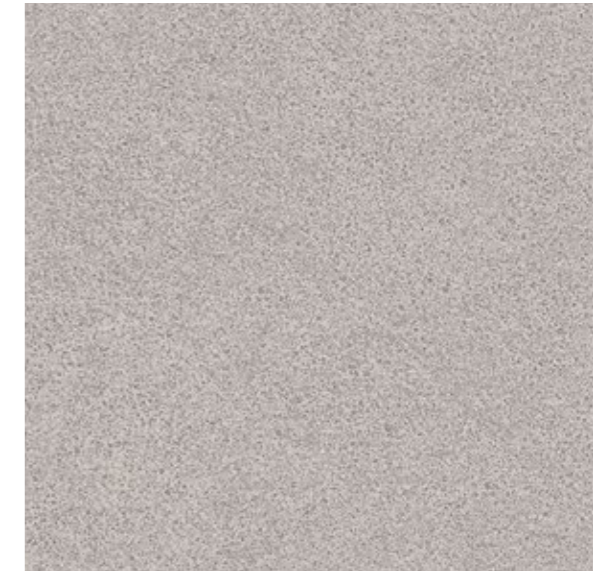


Oxyd Light Grey / Urban Street Medium



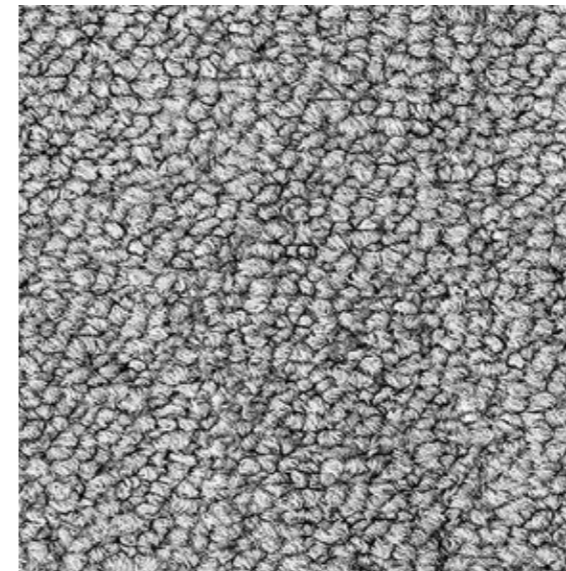
1586 Tweed Light Grey

500×500 mm



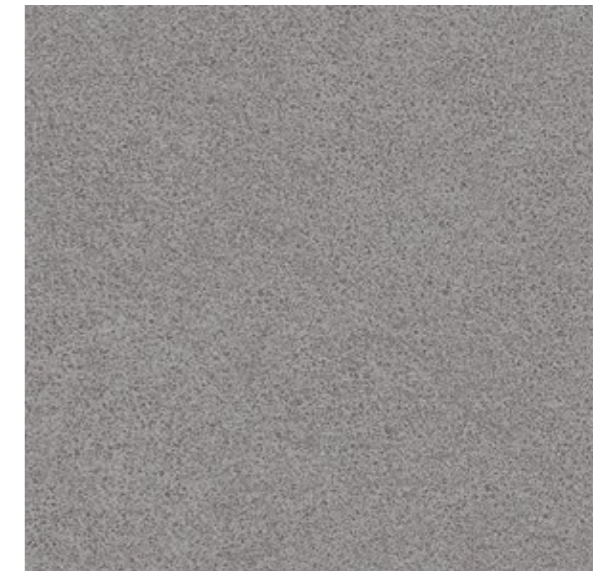
1283 Urban Street Light

500×500 mm



1610 Oxyd Light Grey

500×500 mm



1284 Urban Street Medium

500×500 mm



0030 Gentleman Blue

500×500 mm



0088 Gentleman Grey




500×500 mm



20046319



\* information sur le niveau d'émission de substances volatiles dans l'air intérieur, présentant un risque de toxicité par inhalation, sur une échelle de classe allant de A+ (très faibles émissions) à C (fortes émissions).

			Creation 55 Looselay				Creation 55 Looselay Acoustic				Creation 70 Looselay				Creation Saga <sup>2</sup>	
<b>Description / Beschreibung / Beschrijving / Descripción / Descrição</b>																
Epaisseur totale / Total Thickness / Gesamtdicke / Totale dikte / Espesor total / Esspessura total / Spessore totale	EN ISO24346	mm	4.50				5.50				5.00				4.60	
Epaisseur couche d'usure / Thickness of the wearlayer / Dicke der Nutzschrift / Dikte van de slijtlaag / Espesor capa de uso / Esspessura camada de desgaste / Spessore strato di usura	EN ISO24340	mm	0.55				0.55				0.70				0.70	
Poids / Weight / Flächengewicht / Gewicht / Peso / Peso / Peso	EN ISO 23997	g/m <sup>2</sup>	7500				7600				8300				5595	
Format / Size / Format / Afmetingen / Dimensiones / Dimensões / Dimensie	EN ISO 24342	mm	229x1220	152x914	600x600	914x914	228,6x1220	600x600	235x1505	228,6x1220	152,4x914,4	600x600	914,4x914,4	500 x 500		
Nombre de lames/dalles - m <sup>2</sup> par boîte / Number of planks & tiles - m <sup>2</sup> per box	-	-	6 / 1,67 m <sup>2</sup>	12 / 1,67 m <sup>2</sup>	6 / 2,16 m <sup>2</sup>	4 / 3,34 m <sup>2</sup>	8 / 2,23 m <sup>2</sup>	6 / 2,16 m <sup>2</sup>	4 / 1,41 m <sup>2</sup>	6 / 1,67 m <sup>2</sup>	12 / 1,67 m <sup>2</sup>	4 / 1,44 m <sup>2</sup>	4 / 3,34 m <sup>2</sup>	10 / 2,5 m <sup>2</sup>		
<b>Classification / Klassifikation / Classificatie / Clasificaciones / Classificações / Classificazioni</b>																
Norme/Spécification produit / Norm/Product Specification / Produktnorm / Technische eigenschappen / Normas / Normas / Norma prodotto	-	-	EN ISO 10582				ISO 10582				EN ISO 10582				EN 652	
Classement européen / European Classification / Europäische Klassifizierung / Europese classificatie / Clasificación europea / Classificação Europeia / Europea	EN ISO 10874	classe	33 - 42				33 - 42				34 - 43				34 - 42	
Classement UPEC	-	-	Locaux classés U3P3E1/2C2				-				Locaux classés U4P3E1/2C2				Locaux classés U4P3E1/2C2	
Avis technique	-	n° AT	12/19-1786_V3				-				12/19-1786_V3				12/13/1655_V2	
Classement Feu / Fire Rating / Brandverhalten / Brand classificatie / Fuego / Fogo / Reazione al fuoco	EN 13 501-1	classe	Bfl-s1				Bfl-s1				Bfl-s1				Bfl-s1	
Potentiel de charge / Static Electrical Propensity / Begehaufladung / Elektrische eigenschappen / Comportamiento electrostático / Comportamento elettrostatico / Resistenza elettrica	EN 1815	kV	< 2				< 2				< 2				< 2	
Glissance humide / Slip Resistance Wet / Rutschhemmung / Anti-slip / Deslizamiento húmedo / Escorregamento húmido / Scivolosità umida <sup>1)</sup>	DIN 51130	classe	R10				R10				R10				R10	
<b>Performances / Technische eigenschappen / Testresultaat / Cualidades técnicas / Performances / Caratteristiche tecniche</b>																
Résistance à l'usure / Wear Resistance / Verschleißverhalten / Slijtbaarheid / Abrasión / Abrasão / Resistenza all'abrasione	EN 660.2	mm <sup>3</sup>	≤ 2,0				≤ 2,0				≤ 2,0				≤ 2,0	
Groupe d'abrasion / Wear Group / Verschleißgruppe / Groep slijtbaarheid / Grupo de abrasión / Grupo de abrasão / Gruppo di abrasione	-	-	T				T				T				T	
Teneur en agent liant / Type Binder content / Bindemittelgehalt / Contenido en ligante / Conteúdo em ligante	EN ISO 10582	type	I				I				I				I	
Stabilité dimensionnelle (norme) / Dimensional stability (norm) / Maßstabilität (norm) / Maatvastheid (norm) / Estabilidad Dimensional (Exigencia) / Estabilidade dimensional (normalização) / Stabilità dimensionale (requisito normativo)	EN ISO 23999	%	≤ 0,15				≤ 0,15				≤ 0,15				≤ 0,15	
Stabilité dimensionnelle (valeur moyenne mesurée) / Dimensional stability (average measured value) / Maßstabilität (Durchschnittswert) / Maatvastheid (gemeten gemiddelde waarde) / Estabilidad Dimensional (Valor medido) / Estabilidade Dimensional (Valor medio) / Stabilità dimensionale (rilevata)	-	%	≈ 0,05				≈ 0,05				≈ 0,05				≈ 0,05	
Poinçonnement statique rémanent / Residual Indentation / Resteindruck / Indrukbelasting / Punzonamiento / Puncamento / Impronta	EN ISO 24343-1	mm	≤ 0,10				≤ 0,10				≤ 0,10				< 0,13	
Isolation acoustique bruits de chocs / Impact sound insulation / Trittschallverbesserungsmaß / Geluidsisolatie / Acústica / Isolamento acústico	EN ISO 717-2	dB	7				19				7				15	
Sonorité à la marche / Room Impact / Raumschall / Loopgeluid / Rumore al calpestio / Sonoridad en la pisada / Sonoridade ao andar	NF S 31074	dB	74				70				74				< 65	
Essai de la chaise à roulettes / Castor chair test / Stuhlrollenbeanspruchung / Rolweerstand bureaustoelen / Determinación del efecto de una silla con ruedas / Resistência a cadeiras de rodas / Resistenza al passaggio di sed (Type W)	ISO 4918	-	OK				OK				OK				OK	
Conductivité thermique / Thermal Conductivity / Wärmeleitfähigkeit / Thermische weerstand / Conductividad térmica / Contutividade térmica / Resistenza termica / Wärmededningsmotstånd / Varmemotstand	EN ISO 10456	W/(m.K)	0,25				0,25				0,25				0,25	
Solidité lumière / Colour Fastness / Lichtechtheit / Lichtechtheit / Resistencia a la luz / Estabilidade das cores / Solidità alla luce	EN 20 105 - B02	degré	≥ 6				≥ 6				≥ 6				≥ 6	
Traitement de surface / Surface Treatment / Oberflächenvergütung / Oppervlaktebehandling / Tratamiento de superficie / Tratamento de superficie	-	-	ProtecShield™				ProtecShield™				ProtecShield™				ProtecShield™	
Résistance aux produits chimiques / Chemical Products Resistance / Verhalten gegenüber Chemikalien / Química bestendigheid / Resistencia a los productos químicos / Resistência aos produtos químicos / Resistenza ai prodotti chimici <sup>2)</sup>	EN ISO 26987	-	OK				OK				OK				OK	
<b>Environnement/Qualité de l'air intérieur / Environment/Indoor air quality / Umwelt/raumlufatqualität / Medio ambiente/Calidad interior del aire interior / Meio ambiente/Qualidade do ar interior</b>																
TVOC après 28 jours / TVOC after 28 days / TVOC (28 Tage) / TVOC (28 dagen) / TVOC (28 dias) / TVOC (28 dias) / TVOC (28 giorni) / TVOC (28 dagar) / TVOC (28 dager)	ISO 16000-6	micrograms / m <sup>3</sup>	< 10				< 10				< 10				< 10	
<b>Marquage CE / CE Marking / CE Kennzeichnung / Eg_conformiteitsmerk / Marca De Conformidad CE / Marca DE Conformidade CE / Marcatura CE Di Conformita</b>																
	EN 14041	-	   													

(1) Plan incliné avec huile / Ramp test with oil / Schiefe Ebene  
 (2) Beständig gegenüber nicht färbenden alkoholhaltigen Handdesinfektionsmitteln, Haushaltschemikalien und verdünnten Säuren und Laugen bei kurzzeitiger Einwirkung.

IMPORTANT : Les informations contenues dans ce document sont valables à compter du : 01/11/2024 et susceptibles d'être modifiées à tout moment et sans préavis. L'évolution de la technique étant permanente, il appartient à notre clientèle avant toute mise en œuvre, de vérifier auprès de nos services que le présent document est bien celui en vigueur.

IMPORTANT: The information contained in this document is valid from 01/11/2024 and is subject to change at any time without notice. In the context of constantly changing technology, our customers are responsible, prior to any use, for checking with us that this document is the version in force.

**we care / we act** Our Commitments for a Sustainable future

  
**CARBON FOOTPRINT\***  
 -20 % kg CO<sub>2</sub> equivalent/m<sup>2</sup> between 2020 and 2025

  
**BIOSOURCED CONTENT\*\***  
 10 % by 2025

  
**RECYCLED CONTENT**  
 30 % by 2025

  
**ADHESIVE FREE\*\*\***  
 35 % by 2025

  
**ANNUAL VOLUME RECYCLED**  
 60 000 t by 2025

**Gerflor®**

\* Scopes 1 and 2 defined in the GHG protocol \*\* % of activity with biosourced materials \*\*\* % of activity - adhesive free solution